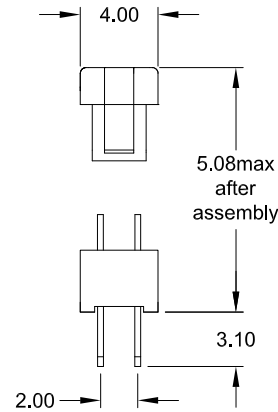
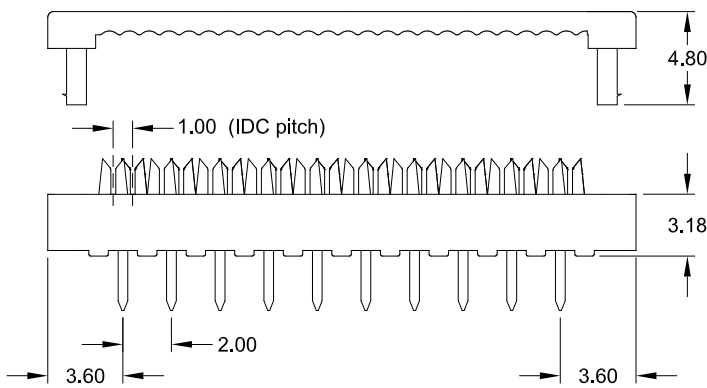
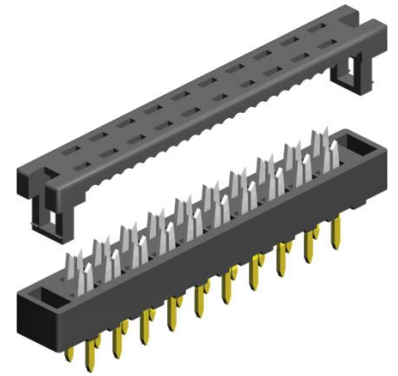


IDC – DIP Plug 2.00mm x 2.00mm

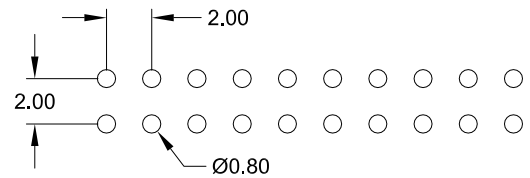
IDC pitch 1.00mm



**Application and Features**

- A perfect solution for attaching a 1.00mm pitch flat ribbon cable to a PC-board
- Low-profile, only 5.08mm with cable
- Designed for direct soldering to a PC-board or plugging into DIP Socket

**PCB Hole Layout**



**Specifications**

Current rating	1 A
Insulation resistance	1000 MΩ min.
Contact resistance	30 mΩ max.
Withstanding voltage	500 V AC

Operating temperature	- 40°C to +105°C
Contact material (RoHS compliant)	Phosphor Bronze
Insulator material (RoHS compliant)	PBT UL 94 V-0

**How to order**

IDP - xxx - S200 - N5

Nbr of contacts
<b>006; 008; 010; 012</b>
<b>014; 016; 018; 020</b>
<b>022; 024; 026; 028</b>
<b>030; 034; 040; 044</b>
<b>050; 060; 068</b>

Plating
<b>N5</b>
Ni on IDC area / Au on solder tail