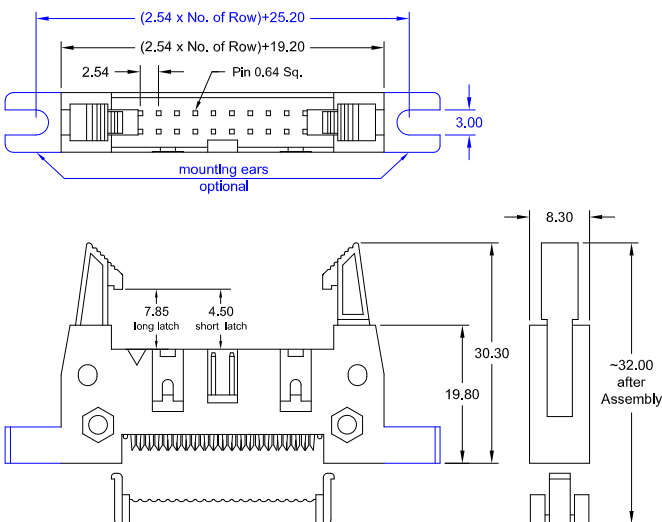


IDH Type



IDD Type

Specifications

|                       |              |                       |                                       |
|-----------------------|--------------|-----------------------|---------------------------------------|
| Current rating        | 3 A          | Operating temperature | - 40°C to +105°C                      |
| Insulation resistance | 1000 MΩ min. | Contact material      | (RoHS compliant) Brass                |
| Withstanding voltage  | 1000 V AC    | Insulator material    | (RoHS compliant) PBT (grey) UL 94 V-0 |

Application and Features

Designed to mate with 2.54mm IDC Female Headers. Header type is available with or without mounting ears.  
DIN Header type IDD is available with long & short eject latches.  
Standard Insulator colour grey, other colours on request

How to order

ID X - xxx - X 100 - N5

| Types                              | Nbr of pins  | Executions |  | Plating  |
|------------------------------------|--|------------|--|--|
| <b>H</b> = Header                  | <b>010; 014; 016; 020</b><br><b>024; 026; 030; 034</b><br><b>040; 050; 060; 064</b><br><i>available with strain relief:</i><br><b>010; 014; 016; 020</b><br><b>026; 034; 040</b> | IDH        | <b>W</b> = w/o ears<br><b>WS</b> = w/o ears, with strain relief<br><b>E</b> = with ears<br><b>ES</b> = with ears, with strain relief           | <b>N5</b> = Nickel/Gold<br><br>other platings on request |
| <b>D</b> = DIN Header (DIN 41 651) | <b>010; 014; 016; 020</b><br><b>024; 026; 030; 034</b><br><b>040; 050; 060; 064</b>  | IDD        | <b>L</b> = long latch, w/o ears<br><b>LE</b> = long latch, with ears<br><b>S</b> = short latch, w/o ears<br><b>SE</b> = short latch, with ears |  |