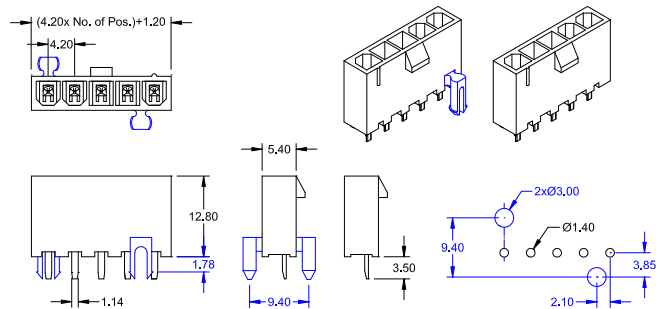
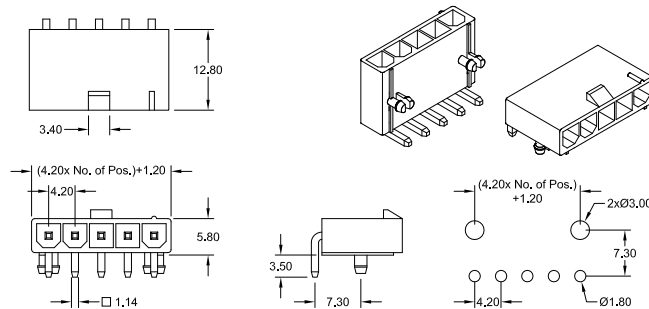


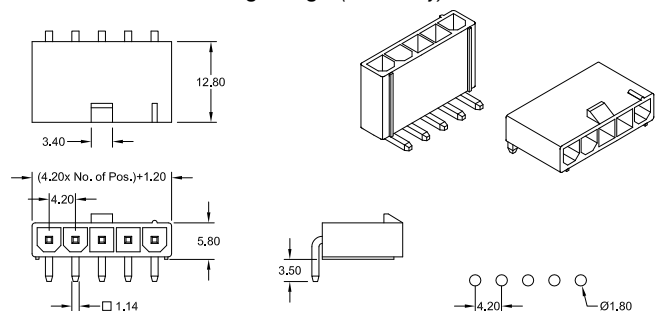
P - Type Single Row fully shrouded with polarity protection**-THT- Male Header** straight (*top entry*) **with** & w/o board lock clips

Order Code: PCS-1xx-P420-99

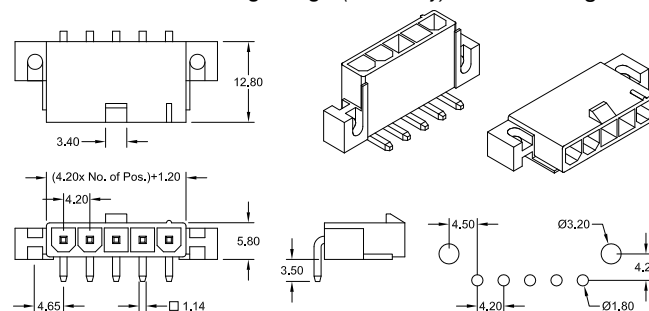
PCS-1xx-PN420-99

-THT- Male Header right angle (*side entry*) with board lock clips

Order Code: PCR-1xx-P420-99

-THT- Male Header right angle (*side entry*)

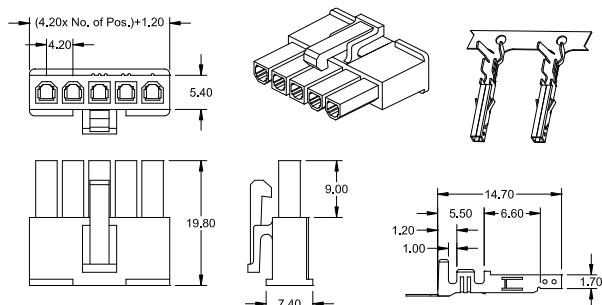
Order Code: PCR-1xx-A420-99

-THT- Male Header right angle (*side entry*) with mounting ears

Order Code: PCR-1xx-W420-99

P - Type Female Plug Single Row -Clip lock Type- with polarity protection

mate with -P420-, -A420- & -W420- Male Header



Order Code Housing: PCF-1xx-P420

Contact: PCF-999/xxX-P420-99

Current rating @30°C:

(dependant on number of contacts and wire size)

Wire Size AWG	Contacts			
	02 ~ 03	04 ~ 06	07 ~ 10	11 ~ 12
#16	9A	8A	7A	6A
#18	9A	8A	7A	6A
#20	7A	6A	5A	5A
#22	5A	4A	4A	4A
#24	4A	3A	3A	3A
#26	3A	2A	2A	2A
#28	2A	1A	1A	1A

Specifications

Current rating pls. see box above
 Insulation resistance 1000 MΩ min.
 Contact resistance 20 mΩ max.

Voltage rating 600 V AC/DC
 Withstanding voltage 1500 V AC
 Operating temperature -25°C to +85°C

Contact material Brass or PhBz
 Insulator material PA66 UL 94V-2
 PCB thickness 1.60 mm

How to order**PC X - x xx - X 420 - 99**

Type	Rows	Nbr of Contacts	Execution	Plating
F = Female R = R/A Male S = Straight Male	1 = single row <i>if Crimp Contact:</i> 9	02 - 12 = P, A & W - Type <i>if Crimp Contact:</i> (MOQ: 5K / reel) <i>if Brass:</i> 99/27 = for AWG 22~28 99/20 = for AWG 18~24 99/14 = for AWG 16 <i>if Phosphor Bronze:</i> 99/27P = for AWG 22~28 99/20P = for AWG 18~24 99/14P = for AWG 16	P = with board lock clips PN = without board lock clips A = without mounting ears W = with mounting ears for details see above dwg's	99 = Tin (leadfree) other platings on request