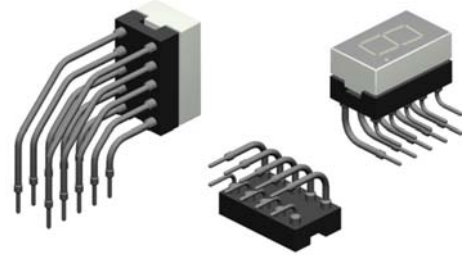


LED socket mounted with precision turned pins ensure perfect contact reliability.

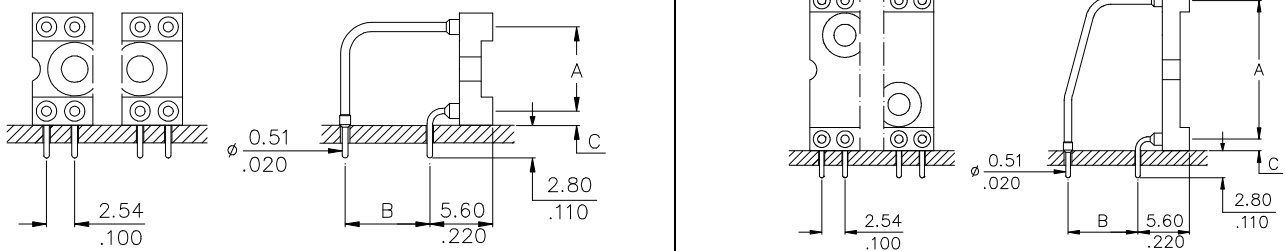
The sockets are available in horizontal and vertical executions.

The contacts are designed to hold many different IC's and LED's with short leads.

The LED sockets are also designed to accept DIP Switches.

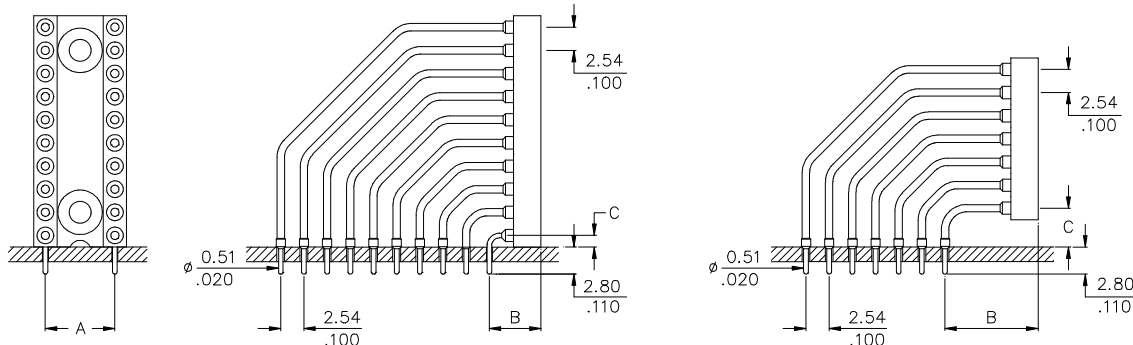


LEH Series - Horizontal -



Ordering Code	Dimensions of the various socket types					
	Standard type -900-		Option -901	Option -902	Option -903	all types
pin-outs on request	Dim. "A"	Dim. "B"	Dim. "B"		Dim. "C"	
LEH - 2 xx - S xxx - 95	5,08/.200	5,08/.200	2,54/.100	7,62/.300	-	1,27/.050
LEH - 3 xx - S xxx - 95	7,62/.300	7,62/.300	2,54/.100	5,08/.200	-	1,27/.050
LEH - 4 xx - S xxx - 95	10,16/.400	10,16/.400	2,54/.100	5,08/.200	7,62/.300	1,27/.050
LEH - 6 xx - S xxx - 95	15,24/.600	7,62/.300	15,24/.600	-	-	1,27/.050
LEH - 6 xx - S904 - 95	15,24/.600	7,62/.300	-	-	-	2,87/.112

LEV Series - Vertical -



Drawing for standard socket type -910

Drawing for all other options

Ordering Code	Dimensions								
	all types	Standard Type -910		Options -915		Options -916		Options -917	
pin-outs on request	"A"	"B"	"C"	"B"	"C"	"B"	"C"	"B"	"C"
LEV - 2 xx - S xxx - 95	5,08/.200	5,60/.220	1,27/.050	8,14/.320	3,81/.150	10,68/.420	6,35/.250	13,22/.520	
LEV - 3 xx - S xxx - 95	7,62/.300	5,60/.220	1,27/.050	8,14/.320	3,81/.150	10,68/.420	6,35/.250	13,22/.520	
LEV - 6 xx - S xxx - 95	15,24/.600	5,60/.220	1,27/.050	8,14/.320	3,81/.150	10,68/.420	6,35/.250	13,22/.520	

LEV - 3 xx - S911 - 95	7,62/.300	10,16/.400	4,87/.192
-------------------------------	-----------	------------	-----------

For technical specifications please refer to page 49

How to order

LE X - x xx - S xxx - 95

