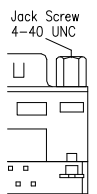
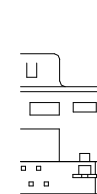
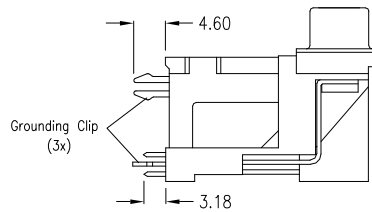
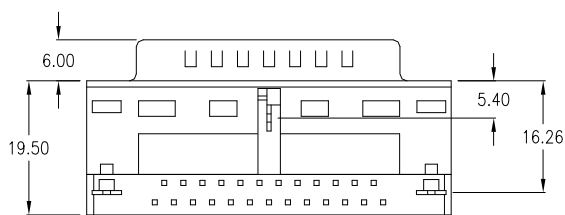
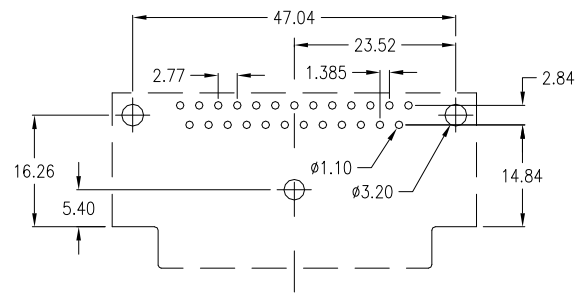
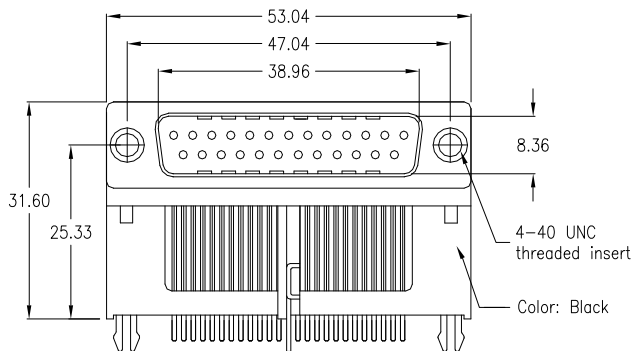


## 25-pin male raised

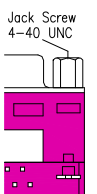
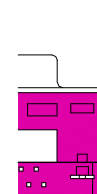
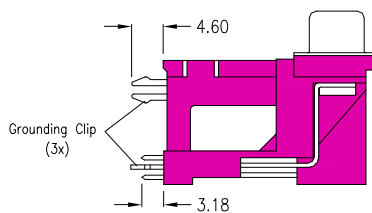
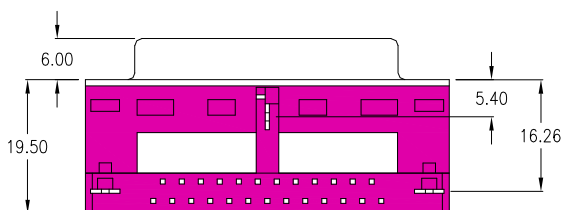
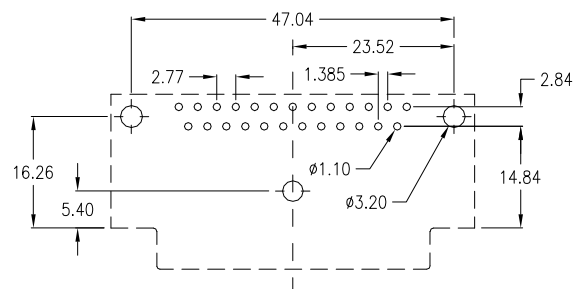
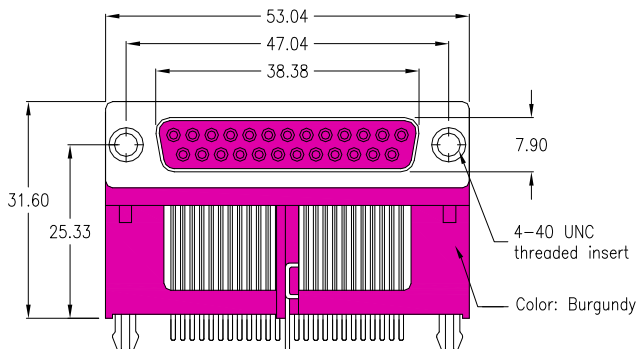


Style "—MN"

Style "-MNJ"

		with 3 grounding clips; w/o jack screws <i>Standard</i> ( as above drawing )	with 3 grounding clips; 2 jack screws 4-40 UNC mounted <i>Option</i>	
		SDD-2500-2-95-MN	SDD-2500-2-95-MNJ	

## 25-pin female raised



Style "-FN"

Style “-FNJ”

		with 3 grounding clips; w/o jack screws <i>Standard</i> ( as above drawing )	with 3 grounding clips; 2 jack screws 4-40 UNC mounted <i>Option</i>	
		SDD-2500-2-95-FN	SDD-2500-2-95-FNJ	

## mechanical data

Mating force per contact	$\leq 3,4 \text{ N}$
Unmating force per contact	$\geq 0,2 \text{ N}$
Temperature range	$-55^{\circ} \text{ C}$ to $+105^{\circ} \text{ C}$
Processing temperature wave solder (solder bath)	$+250^{\circ} \text{ C} \pm 0/-5^{\circ} \text{ C}$ for 10sec.
Processing temperature SMT and "pin in paste"	$+250^{\circ} \text{ C} \pm 0/-5^{\circ} \text{ C}$ for 10sec.
Moisture absorption from air 50% rh	0,10%
IDC Connector types accept AWG 26 or AWG 28 standard wire	

## materials and plating (RoHS compliant)

Insulator for wave solder technology, standard black - PC 99 colourful insulator	thermoplastic glassfilled UL 94V - 0 Yellowish brown - Pantone # 131C 15-pos. female Burgundy - Pantone # 235C 25-pos. female Teal - Pantone # 322C 9-pos. male Blue - Pantone # 661C HD 15-pos.
female	
Insulator for SMT and "Pin-In-Paste"	Nylon UL 94V-0
Shell	Steel, Ni plated
Bracket	Brass, tin plated
Male contact - plating	Copper Alloy (Standard; others on request) <b>-95</b> = solder side Sn; contact side Au over Ni <b>-55</b> = solder and contact side Au over Ni
Female contact - plating	Copper Alloy (Standard; others on request) <b>-95</b> = solder side Sn; contact side Au over Ni <b>-55</b> = solder and contact side Au over Ni <b>-NN</b> = Ni
D-Sub Accessories (page 70) plating	

## electrical data

max. Current rating	5 A/25°C 3 A/70°C (High Density types 3A / IDC types 1A)
Operating voltage	250 V
Test voltage between contacts	1000 V / 50/60 Hz / 1 Minute
Test voltage between shell and contacts	1000 V / 50/60 Hz / 1 Minute
Resistance between mated contacts	$< 30 \text{ m } \Omega$
Insulation resistance	$\geq 1000 \text{ M } \Omega$ at 500V DC
Dielectric strength	1000 V AC min. for 1 Minute
Volume resistivity	$10^{16} \text{ } \Omega \text{ cm}$ (ASTM-D 257 )

## available performance classes

E-tec D-Sub connectors comply with Performance Class 3 (min. 50 contact cycles).

Please contact E-tec first for availability of Performance Class 2 (min. 200 contact cycles) and 1 (min. 500 contact cycles)

## D-Sub with Filter ( ferrite )

Frequency range	10	-	300 MHz
Impedance	5 MHz	-	15 $\Omega$
	25 MHz	-	30 $\Omega$
	100 MHz	-	50 $\Omega$
	300 MHz	-	75 $\Omega$

