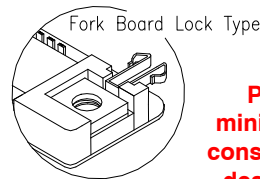
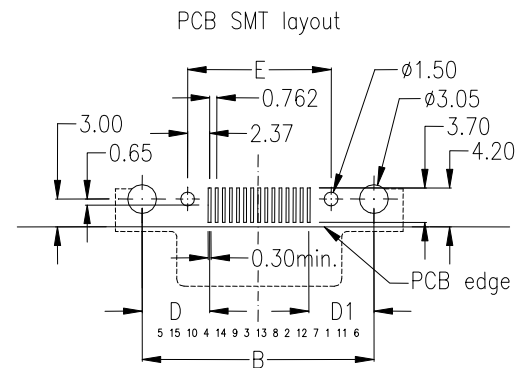
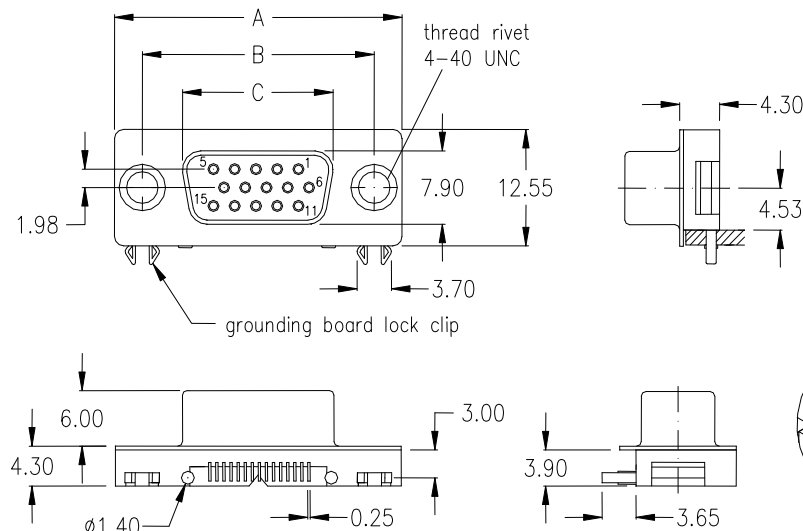


female — with fork board lock type —



Special product.

Please ask for availability and minimum order quantity before you consider the article for development, design in or production purposes.

for technical & electrical specification please go to page 72

| No. of contacts | Dimension | | | | | |
|-----------------|----------------|---------------|---------------|---------------|---------------|---------------|
| | A | B | C | D | D1 | E |
| 015 | 30.81 1.213 | 24.99 .984 | 16.33 .643 | 7.296 .287 | 7.026 .277 | 15.46 .609 |

Ordering Code

SSF - 015 - HU98 - 95 / N

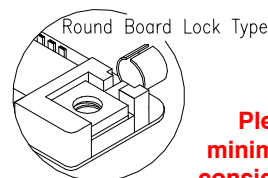
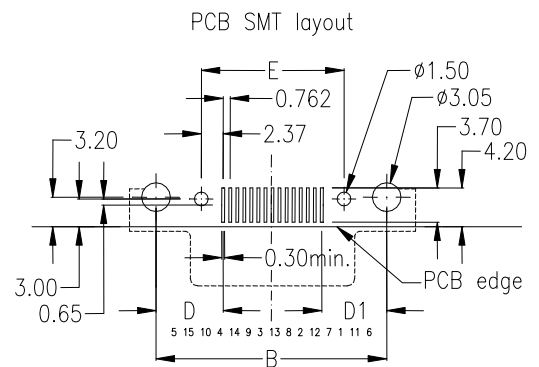
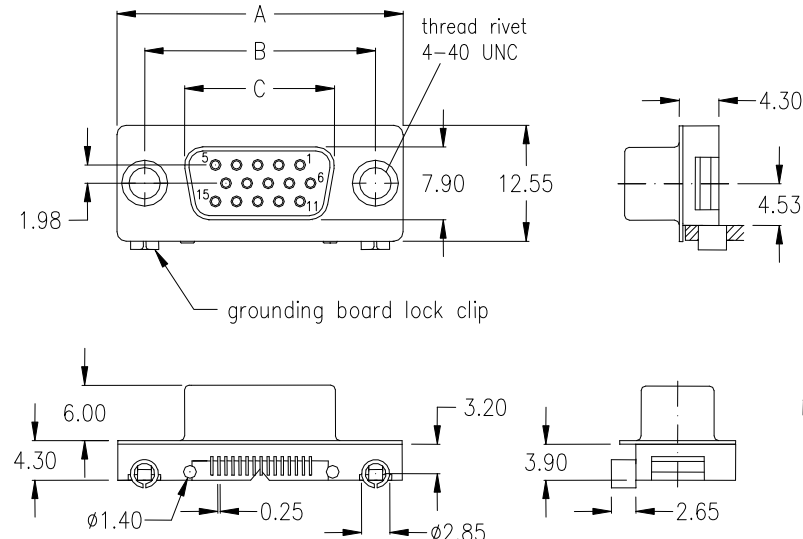
Option:

Jack Screw has to be ordered separately.

See page 70

Plating: -95= tin(leadfree)/gold

female — with round board lock type —



Special product.

Please ask for availability and minimum order quantity before you consider the article for development, design in or production purposes.

for technical & electrical specification please go to page 72

| No. of contacts | Dimension | | | | | |
|-----------------|----------------|---------------|---------------|---------------|---------------|---------------|
| | A | B | C | D | D1 | E |
| 015 | 30.81 1.213 | 24.99 .984 | 16.33 .643 | 7.296 .287 | 7.026 .277 | 15.46 .609 |

Ordering Code

SSF - 015 - HU98 - 95 / R

Option:

Jack Screw has to be ordered separately.

See page 70

Plating: -95= tin(leadfree)/gold

mechanical data

| | |
|---|---|
| Mating force per contact | $\leq 3,4 \text{ N}$ |
| Unmating force per contact | $\geq 0,2 \text{ N}$ |
| Temperature range | -55° C to $+105^{\circ} \text{ C}$ |
| Processing temperature wave solder (solder bath) | $+250^{\circ} \text{ C} \pm 0/-5^{\circ} \text{ C}$ for 10sec. |
| Processing temperature SMT and "pin in paste" | $+250^{\circ} \text{ C} \pm 0/-5^{\circ} \text{ C}$ for 10sec. |
| Moisture absorption from air 50% rh | 0,10% |
| IDC Connector types accept AWG 26 or AWG 28 standard wire | |

materials and plating (RoHS compliant)

| | |
|---|--|
| Insulator for wave solder technology, standard black - PC 99 colourful insulator | thermoplastic glassfilled UL 94V - 0 Yellowish brown - Pantone # 131C 15-pos. female Burgundy - Pantone # 235C 25-pos. female Teal - Pantone # 322C 9-pos. male Blue - Pantone # 661C HD 15-pos. |
| female | |
| Insulator for SMT and "Pin-In-Paste" | Nylon UL 94V-0 |
| Shell | Steel, Ni plated |
| Bracket | Brass, tin plated |
| Male contact - plating | Copper Alloy (Standard; others on request) -95 = solder side Sn; contact side Au over Ni -55 = solder and contact side Au over Ni |
| Female contact - plating | Copper Alloy (Standard; others on request) -95 = solder side Sn; contact side Au over Ni -55 = solder and contact side Au over Ni -NN = Ni |
| D-Sub Accessories (page 70) plating | |

electrical data

| | |
|---|--|
| max. Current rating | 5 A/25°C 3 A/70°C (High Density types 3A / IDC types 1A) |
| Operating voltage | 250 V |
| Test voltage between contacts | 1000 V / 50/60 Hz / 1 Minute |
| Test voltage between shell and contacts | 1000 V / 50/60 Hz / 1 Minute |
| Resistance between mated contacts | $< 30 \text{ m } \Omega$ |
| Insulation resistance | $\geq 1000 \text{ M } \Omega$ at 500V DC |
| Dielectric strength | 1000 V AC min. for 1 Minute |
| Volume resistivity | $10^{16} \text{ } \Omega \text{ cm}$ (ASTM-D 257) |

available performance classes

E-tec D-Sub connectors comply with Performance Class 3 (min. 50 contact cycles).

Please contact E-tec first for availability of Performance Class 2 (min. 200 contact cycles) and 1 (min. 500 contact cycles)

D-Sub with Filter (ferrite)

| | | | |
|-----------------|---------|---|-------------|
| Frequency range | 10 | - | 300 MHz |
| Impedance | 5 MHz | - | 15 Ω |
| | 25 MHz | - | 30 Ω |
| | 100 MHz | - | 50 Ω |
| | 300 MHz | - | 75 Ω |

