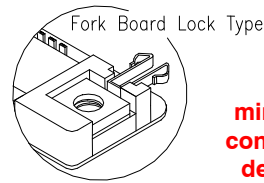
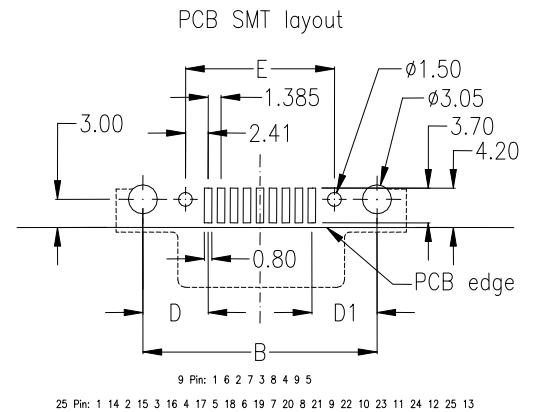
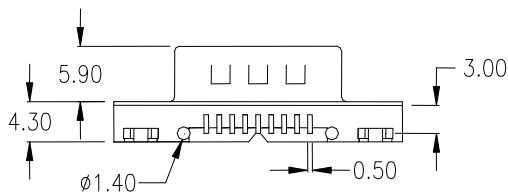
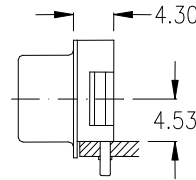
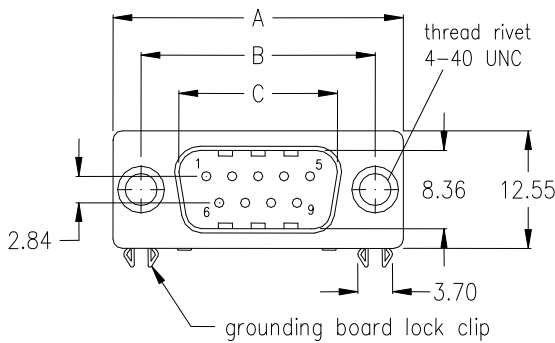


SS Series - SMT D-Sub 90° U908 Ultra Slim Profile



male — with fork board lock type —



Special product.
Please ask for availability and minimum order quantity before you consider the article for development, design in or production purposes.

for technical & electrical specification please go to page 72

No. of contacts	Dimension					
	A	B	C	D	D1	E
009	30.81 1.213	24.99 .984	16.92 .666	6.96 .274	6.96 .274	15.90 .626
025	53.04 2.088	47.04 1.852	38.96 1.534	6.90 .272	6.90 .272	38.06 1.498

Ordering Code

SSM - xxx - U908 - 95 / N

No. of contacts

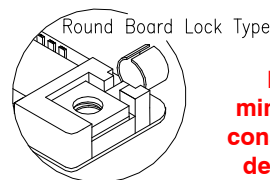
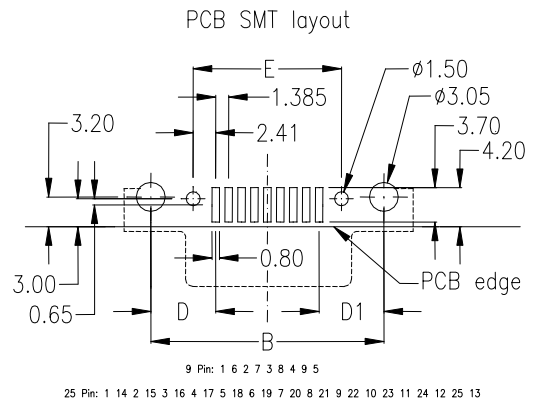
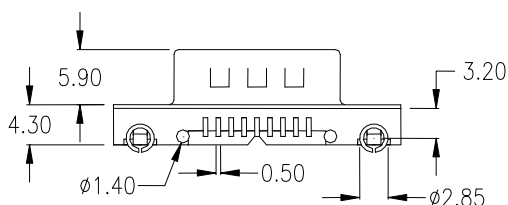
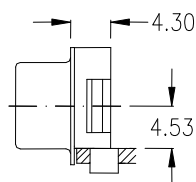
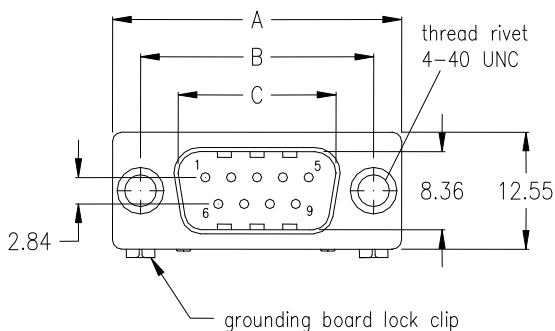
Plating: -95= tin(leadfree)/gold

Option:

Jack Screw has to be ordered separately.

See page 70

male — with round board lock type —



Special product.
Please ask for availability and minimum order quantity before you consider the article for development, design in or production purposes.

for technical & electrical specification please go to page 72

No. of contacts	Dimension					
	A	B	C	D	D1	E
009	30.81 1.213	24.99 .984	16.92 .666	6.96 .274	6.96 .274	15.90 .626
025	53.04 2.088	47.04 1.852	38.96 1.534	6.90 .272	6.90 .272	38.06 1.498

Ordering Code

SSM - xxx - U908 - 95 / R

No. of contacts

Plating: -95= tin(leadfree)/gold

Option:

Jack Screw has to be ordered separately.

See page 70

mechanical data

Mating force per contact	$\leq 3,4 \text{ N}$
Unmating force per contact	$\geq 0,2 \text{ N}$
Temperature range	-55° C to $+105^{\circ} \text{ C}$
Processing temperature wave solder (solder bath)	$+250^{\circ} \text{ C} \pm 0/-5^{\circ} \text{ C}$ for 10sec.
Processing temperature SMT and "pin in paste"	$+250^{\circ} \text{ C} \pm 0/-5^{\circ} \text{ C}$ for 10sec.
Moisture absorption from air 50% rh	0,10%
IDC Connector types accept AWG 26 or AWG 28 standard wire	

materials and plating (RoHS compliant)

Insulator for wave solder technology, standard black - PC 99 colourful insulator	thermoplastic glassfilled UL 94V - 0 Yellowish brown - Pantone # 131C 15-pos. female Burgundy - Pantone # 235C 25-pos. female Teal - Pantone # 322C 9-pos. male Blue - Pantone # 661C HD 15-pos.
female	
Insulator for SMT and "Pin-In-Paste"	Nylon UL 94V-0
Shell	Steel, Ni plated
Bracket	Brass, tin plated
Male contact - plating	Copper Alloy (Standard; others on request) -95 = solder side Sn; contact side Au over Ni -55 = solder and contact side Au over Ni
Female contact - plating	Copper Alloy (Standard; others on request) -95 = solder side Sn; contact side Au over Ni -55 = solder and contact side Au over Ni -NN = Ni
D-Sub Accessories (page 70) plating	

electrical data

max. Current rating	5 A/25°C 3 A/70°C (High Density types 3A / IDC types 1A)
Operating voltage	250 V
Test voltage between contacts	1000 V / 50/60 Hz / 1 Minute
Test voltage between shell and contacts	1000 V / 50/60 Hz / 1 Minute
Resistance between mated contacts	$< 30 \text{ m } \Omega$
Insulation resistance	$\geq 1000 \text{ M } \Omega$ at 500V DC
Dielectric strength	1000 V AC min. for 1 Minute
Volume resistivity	$10^{16} \text{ } \Omega \text{ cm}$ (ASTM-D 257)

available performance classes

E-tec D-Sub connectors comply with Performance Class 3 (min. 50 contact cycles).

Please contact E-tec first for availability of Performance Class 2 (min. 200 contact cycles) and 1 (min. 500 contact cycles)

D-Sub with Filter (ferrite)

Frequency range	10 - 300 MHz
Impedance	5 MHz - 15 Ω 25 MHz - 30 Ω 100 MHz - 50 Ω 300 MHz - 75 Ω

